

1½" MAX DOW STYROFOAM™
 SPRAY POLYURETHANE FOAM
 CM SERIES IN ALL STUD CAVITIES

DOW THERMAX™ cI
 EXTERIOR INSULATION
 5/8"-3" THICK
 (HORIZONTAL SHIPLAPPED
 BOARDJOINT ON THICKNESSES
 >= 1.55" THICK)

DOW WEATHERMATE™
 STRAIGHT FLASHING
 AT ALL THERMAX JOINTS
 AND BEHIND ANCHOR
 PENETRATIONS

AIR CAVITY

FACE BRICK

DOW WEATHERMATE™
 FLASHING AT ALL THERMAX™ cI
 JOINTS AND BEHIND ANCHOR
 PENETRATIONS

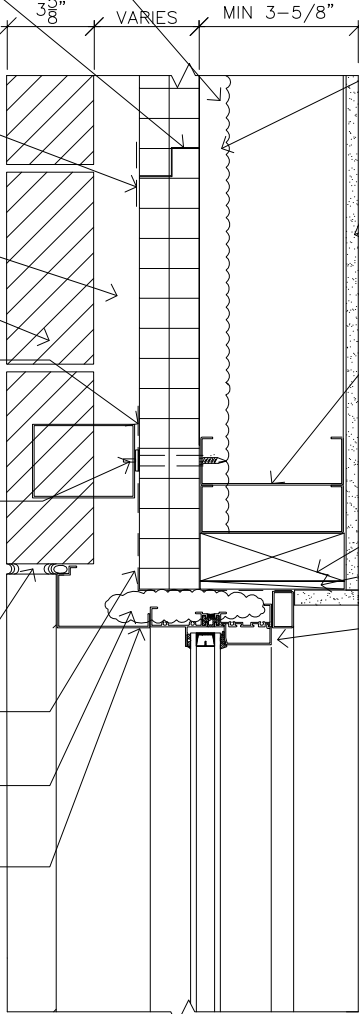
BRICK VENEER ANCHOR

BACKER ROD AND SEALANT

DOW WEATHERMATE™ FLASHING
 (RETURNED TO JAMB BLOCKING)

DOW GREAT STUFF™ PRO WINDOW
 & DOOR INSULATING FOAM SEALANT

ALUMINUM PANNING



1½" MAX DOW STYROFOAM™
 SPRAY POLYURETHANE FOAM
 CM SERIES IN ALL STUD CAVITIES

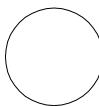
5/8" TYPE X GYPSUM SHEATHING

STEEL STUD
 MIN 20 GAUGE, MAX 24" OC,
 LATERAL BRACING EVERY
 4'-0" VERTICALLY

WOOD BLOCKING

SHIM

ALUMINUM WINDOW



DETAIL AT WINDOW JAMB

REFERENCE DETAIL: REGISTERED PROFESSIONAL TO REVIEW PRIOR TO USE

DETAIL	TITLE: WALL: BRICK VENEER- THERMAX™ WALL SYSTEM	SKETCH NUMBER
	The Dow Chemical Company Dow Building Solutions	Date: 02/13/2009 Scale: 1-1/2"=1'-0" Drawn: ---