

1 1/2" MAX **DOW STYROFOAM™**
SPRAY POLYURETHANE FOAM
CM SERIES IN ALL STUD CAVITIES

DOW THERMAX™ ci
EXTERIOR INSULATION
 5/8" - 3" THICK
 (HORIZONTAL SHIPLAPPED
 BOARDJOINT ON THICKNESSES
 >/= 1.55" THICK)

DOW WEATHERMATE™
STRAIGHT FLASHING
 AT ALL THERMAX JOINTS
 AND BEHIND ANCHOR
 PENETRATIONS

TERMINATION BAR

DOW WEATHERMATE™
FLASHING (SHINGLE FLASHED OVER
 TERM BAR AND BASE FLASHING)

BASE FLASHING TO **DOW THERMAX™ ci**
EXTERIOR INSULATION

CAVITY DRAINAGE MESH

WEEPS AT 2'-0" OC

FACE BRICK

5/8" TYPE X GYPSUM SHEATHING

STEEL STUD
 MIN 20 GAUGE, MAX 24"OC,
 LATERAL BRACING EVERY
 4'-0" VERTICALLY

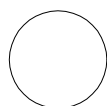
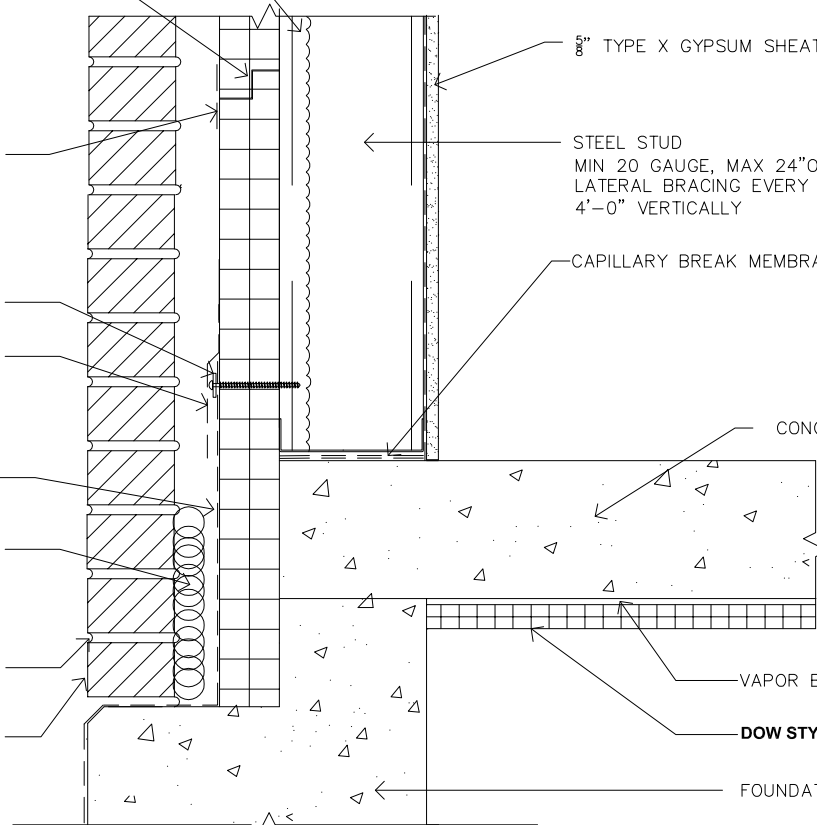
CAPILLARY BREAK MEMBRANE

CONCRETE SLAB

VAPOR BARRIER

DOW STYROFOAM™

FOUNDATION WALL



DETAIL: BASE FLASHING AT FOUNDATION

REFERENCE DETAIL: REGISTERED PROFESSIONAL TO REVIEW PRIOR TO USE

DETAIL

TITLE: WALL: BRICK VENEER-
 THERMAX™ WALL SYSTEM

SKETCH NUMBER

The Dow Chemical Company
 Dow Building Solutions

Date: 02/13/2009
 Scale: 1-1/2"=1'-0"
 Drawn: ---

SK-B7

7 OF 7