

1 1/2" MAX DOW STYROFOAM™  
 SPRAY POLYURETHANE FOAM  
 CM SERIES IN ALL STUD CAVITIES

DOW THERMAX™ ci  
 EXTERIOR INSULATION  
 5/8"–3" THICK  
 (HORIZONTAL SHIPLAPPED  
 BOARDJOINT ON THICKNESSES  
 >/= 1.55" THICK)

DOW WEATHERMATE™  
 STRAIGHT FLASHING  
 AT ALL THERMAX JOINTS  
 AND BEHIND ANCHOR  
 PENETRATIONS

DOW WEATHERMATE™  
 FLASHING

CAVITY DRAINAGE MESH

FORMED METAL FLASHING  
 SET SEALANT

OPEN HEAD WEEPS  
 AT 2'-0" OC

DOW WEATHERMATE™ FLASHING  
 SHELF ANGLE DESIGN TO  
 ACCOMMODATE INSULATION THICKNESS

BRICK VENEER ANCHOR

DOW WEATHERMATE™  
 FLASHING AT ALL THERMAX™ ci  
 JOINTS AND BEHIND ANCHOR  
 PENETRATIONS

5/8" TYPE X GYPSUM SHEATHING

STEEL STUD  
 MIN 20 GAUGE, MAX 24"OC,  
 LATERAL BRACING EVERY  
 4'-0" VERTICALLY

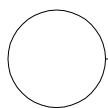
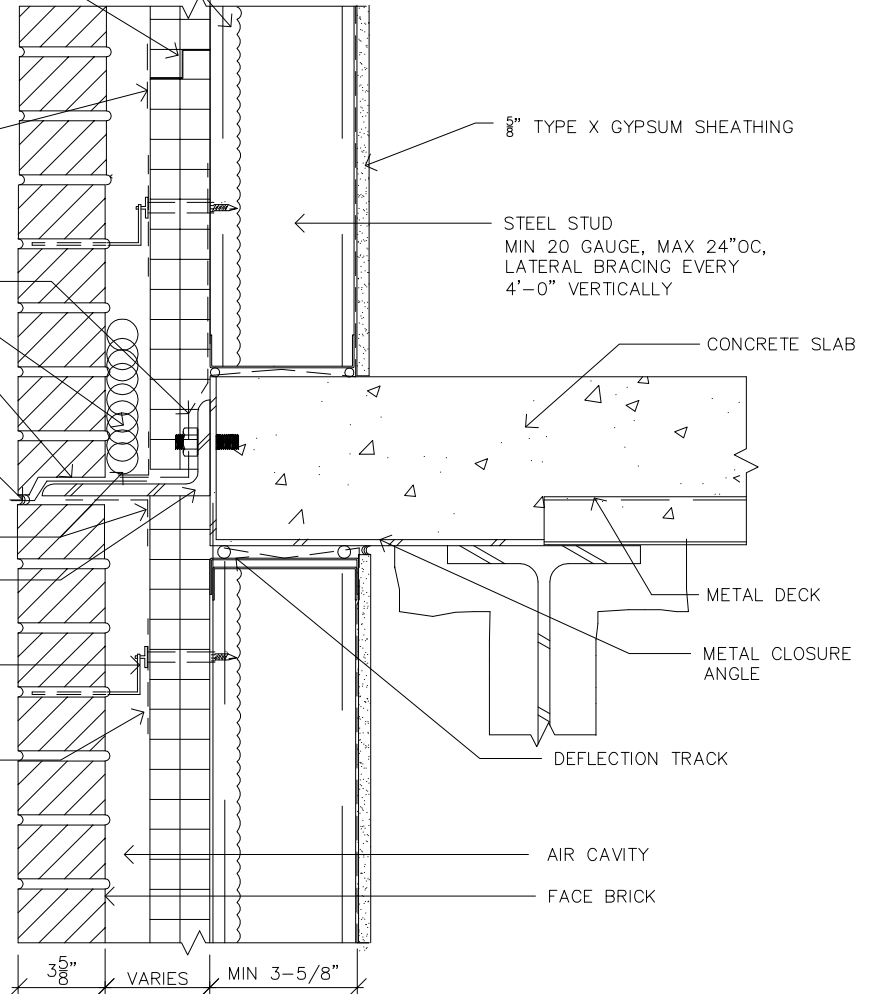
CONCRETE SLAB

METAL DECK

METAL CLOSURE  
 ANGLE

AIR CAVITY

FACE BRICK



## DETAIL AT FLOOR SLAB

REFERENCE DETAIL: REGISTERED PROFESSIONAL TO REVIEW PRIOR TO USE

<p>DETAIL</p>	<p>TITLE: WALL: BRICK VENEER–        THERMAX™ WALL SYSTEM</p>	<p>SKETCH NUMBER</p>
<p>The Dow Chemical Company        Dow Building Solutions</p>	<p>Date: 02/13/2009        Scale: 1-1/2"=1'-0"        Drawn: ---</p>	<p>SK-B3        3 OF 7</p>